



# P-5 W POI

## White LED Wash Light



### Description

SGM's P-5 W POI is a powerful IP66-rated outdoor white output LED wash light with a bright and accurate beam projection, suitable for any architectural application that requires high output, thus, perfect for medium to large-scale applications such as building facades and structures, bridges, and towers. The P-5 W POI luminaire comes with different beam angles to comply with specific illumination task.

### Features and benefits

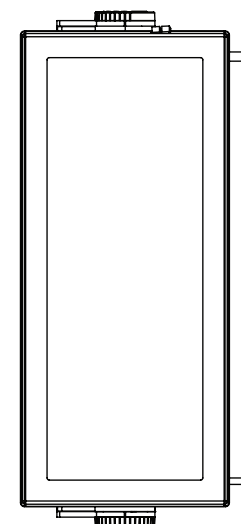
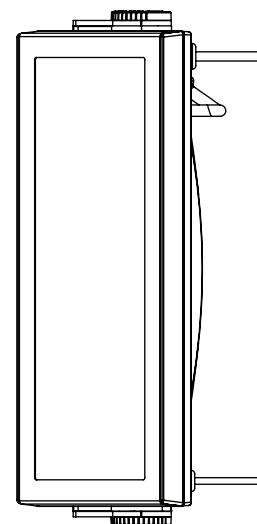
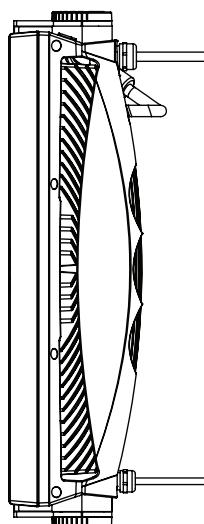
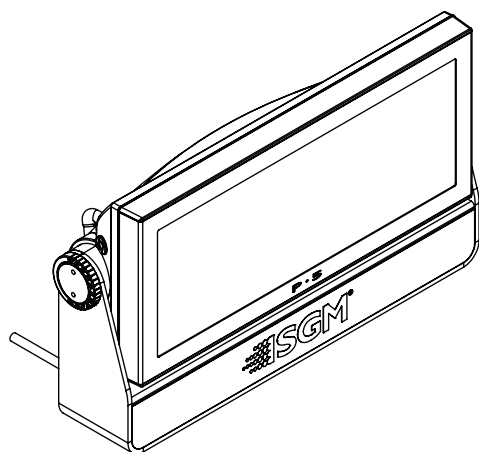
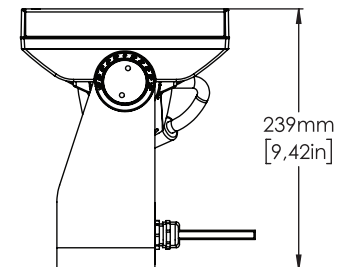
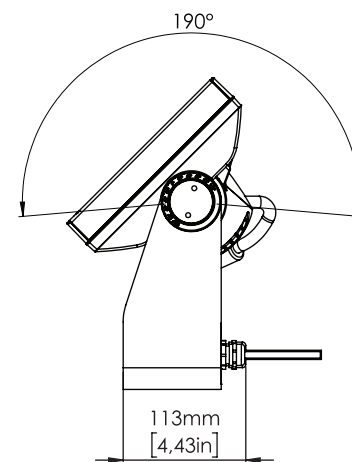
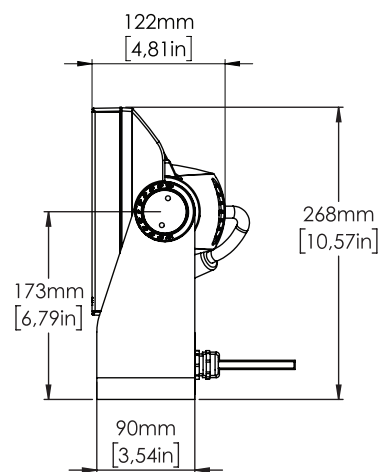
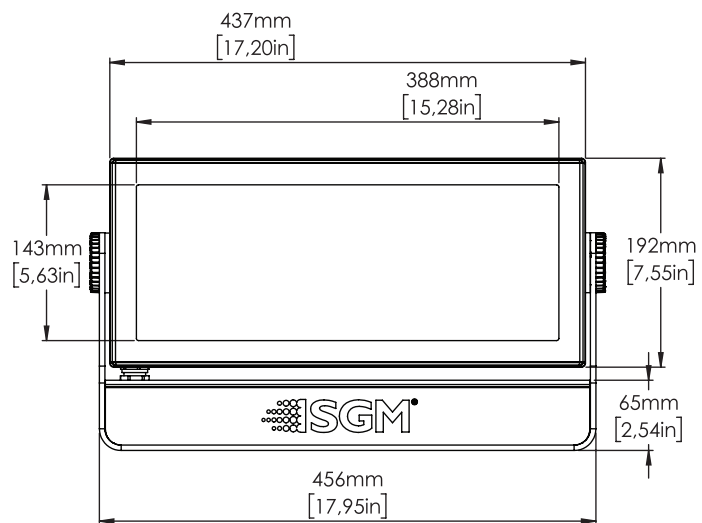
- ✓ High-performance white LED wash light with 23700 lumen
- ✓ 43°, 21° and 15° native lenses
- ✓ 6400K and 56 lm/W
- ✓ Ideal application: Medium throws for building facades and structures, bridges, and towers
- ✓ Flicker-free operation with 100% smooth dimming performance
- ✓ IP66-rated with a patented built-in dehumidifier for a maintenance free operation
- ✓ 5-year warranty in corrosion class C5-M (marine)
- ✓ Rugged construction in an ultra-compact design

### Certifications & classifications

IP66

RoHS





# Specification

<b>Optical Data</b>	LED expected lifetime	50,000 hours
	Lightsource	44 x high-power 10W cool white LEDs (6,400K)
	Native lens options	15° 21° 43°
<b>Photometric</b>	Color temperature	6400K
	Efficacy	56 lm/W
	Light output all LEDs on	23700 lm
	Lumen per kilogram	2663 lm / Kg
	Lux @ 10m	2078 lux
	Lux @ 5m	8311 lux
	Native beam angle(s)	14° (with 15° lens) 26° (with 21° lens) 35° (with 43° lens)
	Native field angle(s)	54° (with 21° lens) 31° (with 15° lens) 74° (with 43° lens)
<b>Physical</b>	Color options	Black - RAL 9004 Custom color - Any RAL White - RAL 9010
	Corrosion class	CX (C5-M - ISO 12944)
	Effective Projected Area	1.72 Square ft
	IP class	IP66
	Lens material	PE
	Material	Aluminium
	Net dimensions	497 x 268 x 122 mm
	Net dimensions inches	19.6 x 10.6 x 4.8 inches
	Net weight	8.9 kg (19.6 lbs)
<b>Features</b>	Color calibration	Single-unit color
	Dehumidifier	Base / Head
	Dimming	2 Smooth fade in, DMX-controllable curves: gamma corrected, and linear
	Filters	Optional internal spread angle filters (factory assembled)
	Other	LED frequency control, display selectable
	Power / DMX indicator	Head
	Strobe	Ultra-high-speed strobe effects

	Tilt	0 - 190°
	Tilt locking system	POI Locking system with pignose bolts and angle indicator
<b>Electrical</b>	Electrical protection	Overload protection
	Input voltage, absolute max. rating	190 - 264 VAC; 50 / 60 Hz
	Input voltage, nominal	208 - 240 VAC; 50 / 60 Hz
	Max inrush current 230VAC	45 A
	Max power consumption	470 W
	Power factor	0.99 PF (230 V)
	Power Supply Unit	Auto-ranging electronic switch-mode
	Standby power consumption	8 W
<b>Programming and Control</b>	16-bit control	Dimmer
	DMX channels	1 or 2
	DMX modes	2
	Protocol	USITT DMX512A RDM ANSI E1.20
	Setting and addressing	RDM ANSI E1.20
<b>Connections</b>	Data cable diameter	6,5 mm +/- 0,2 mm
	DMX data in/out	5 meter cable for DMX In and DMX Thru (permanently wired)
	Power	Power cable 5 meter with bare ends (permanently wired)
	Power cable diameter	8,5 mm +/- 0,3 mm
<b>Installation</b>	Mounting point	2 x 2 M-10 locking points (suitable for one or two optional POI Omega brackets)
	Orientation	Any
	Rigging possibilities	Hanging / horizontal mounted
	Safety features	Bottom mount for safety wire
<b>Thermal</b>	Cooling	Active, Forced Air, Temperature-regulated
	Humidity (max.)	98 %
	Temperature range, operating	-40°C to 50°C
	Temperature range, start-up	-20°C to 50°C
	Temperature range, storage	-40°C to 80°C
	Thermal protection	Automatic overtemperature protection
	Total heat dissipation, max power	1603.6 BTU per hour
	Total heat dissipation, standby	27.3 BTU per hour

<b>Included items</b>	Included items	POI Pignose-lock Key with magnet Safety instructions and installation quick guide 4 M-10 screws
<b>Conforms To</b>	CE - 2014/30/EU: EMC Directive	EN 55103-1 EN 55103-2 EN 55015 EN 61547 EN 61000-3-2 EN 61000-3-3
	CE - 2014/35/EU: Low Voltage Directive	EN 60598-1 EN 60598-2-17 EN 62471 EN 60529
	RoHS2 Directive	2011/65/EU
	UL	UL Std. 1573
<b>Certified To</b>	CSA	CSA Std. C22.2 No. 166

**NOTES:**

Due to continuous improvements and innovations, specifications may change without notice.

LEDs' expected lifetime provided by manufacturer and obtained under manufacturer's test conditions.

Zoom range defined as a minimum beam angle to a maximum field angle.

Photometric measurements obtained with Goniometer Scan / SGM Illumination Lab 1.6.0.0.

Lumen output in pixel products is calculated.

## Ordering information

Qty	Product name	Item number
<input type="checkbox"/>	P-5 W, 15°, POI, CU	80250314
<input type="checkbox"/>	P-5 W, 43°, POI, BL	80250112
<input type="checkbox"/>	P-5 W, 43°, POI, WH	80250113
<input type="checkbox"/>	P-5 W, 21°, POI, BL	80250212
<input type="checkbox"/>	P-5 W, 15°, POI, BL	80250312
<input type="checkbox"/>	P-5 W, 43°, POI, CU	80250114
<input type="checkbox"/>	P-5 W, 21°, POI, WH	80250213
<input type="checkbox"/>	P-5 W, 15°, POI, WH	80250313
<input type="checkbox"/>	P-5 W, 21°, POI, CU	80250214
<input type="checkbox"/>		
	Accessories	Item number
<input type="checkbox"/>	Vacuum Test Kit	83061136
<input type="checkbox"/>	Anti-glare shield, half - POI, P·5/Q·7/i·5 Series	83061162
<input type="checkbox"/>	Anti-glare shield, full - POI, P·5/Q·7/i·5 Series	83061165
<input type="checkbox"/>	Spanner key / Magnet for POI	19080604
<input type="checkbox"/>	Mounting plate, flat - POI P·5, Q·7, i·5 Series	83060617
<input type="checkbox"/>	Mounting plate, 90° - POI P·5, Q·7, i·5 Series	83060620
<input type="checkbox"/>	RDM Addressing Tool	
<input type="checkbox"/>	Omega Bracket POI	83060623
<input type="checkbox"/>	SGM USB uploader cable, POI	83062067
<input type="checkbox"/>		



Headquarter +45 70 20 74 00

Mail [info@sgmlight.com](mailto:info@sgmlight.com)

Website [sgmlight.com](http://sgmlight.com)