

# COLW101

Column speaker for speech 100V



The COLW101 offers excellent audio directivity for music as well as speech. Thanks to the elegant design, this speaker is ideal for indoor and outdoor use: from sports fields to public buildings or recreational areas, meeting rooms or educational facilities.

Apart column speakers offer the perfect combination of looks and acoustical qualities! The COLW101 has 10 x 3,3" woofers and 1 x 1" tweeter.

A standard wall bracket and installation tools are included.

The standard color of COLW101 is white. From 12 pieces on, the COLW101 speakers can be painted in any RAL color (REF: PAINTCOL).

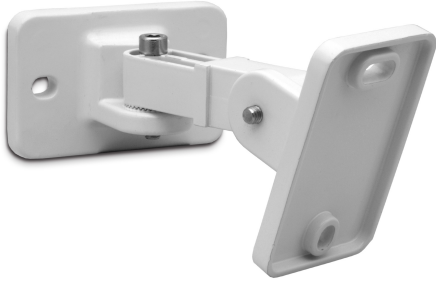
## TECHNICAL SPECIFICATIONS

height in mm	1180	width in mm	100
depth in mm	83	loudspeaker system	multiple
woofer size in inch	10 x 3,3	woofer cone material	coated paper
tweeter size in inch	1	mounting system	L-brackets
colour	white	100V transformer power taps in watts	100 - 60 - 40
low impedance dynamic power in watts	140	SPL 1W/1m in dB	99
max SPL 1m in dB	118	frequency response in Hz	160 - 20K
main construction material	aluminium	grille main material	aluminium
IP rating	66	Horizontal dispersion angle 1000 Hz	180°
Vertical dispersion angle 1000 Hz	65°	Net weight product (kg)	7,30

## MORE PICTURES



## ACCESSORIES



### **COLWBRA**

Bracket for easy tilting and rotating of COLW sound columns