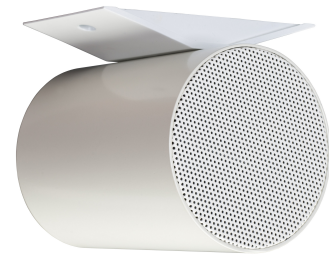


EN-MPBD5T10-W

EN54-24 certified 2 x 5" bi-directional sound projector



The Apart EN-MPBD5T10-W is a compact and stylish sound projector made of powder coated aluminium (RAL 9010 equivalent), equipped with 2 high efficiency full range 5.25 inch drivers and a multi tap 100 volt transformer, all certified according EN 54-24. The unit is equipped with a ceramic speaker line connector block and a thermal fuse.

With the bi-directional mounted full range drivers, the EN-MPBD5T10-W is perfect for installations in corridors and halls for background music as well as for paging and evacuation purposes.

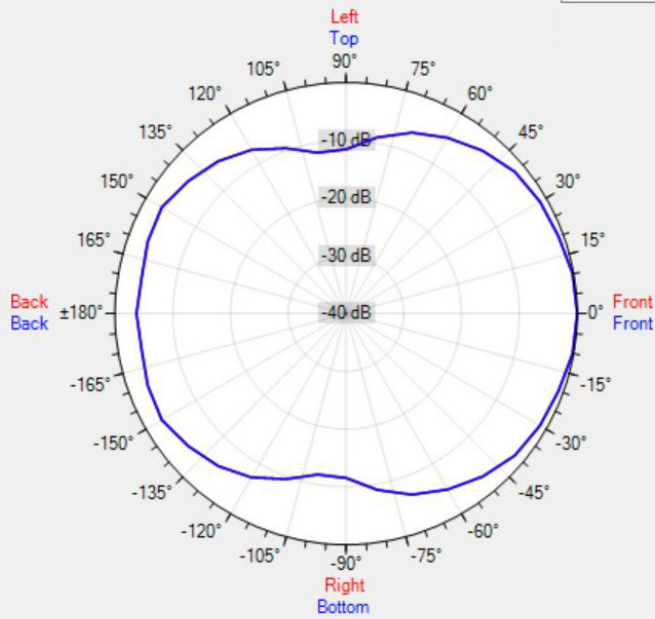
TECHNICAL SPECIFICATIONS

outside diam. in mm	140	depth in mm	164
loudspeaker system	full range	woofer size in inch	2 x 5.25
woofer cone material	coated paper	mounting system	2 screws
colour	white	100V transformer power taps in watts	10 - 6 - 3 - 1.5
SPL 1W/1m in dB	94	max SPL 1m in dB	104
frequency response in Hz	145 - 17.5 k	main construction material	aluminium
IP rating	54	operating temperatures	-25°C to 70°C
applicable low impedance	no	applicable in 100V	yes
certificate ref	1438/CPR/0356	Vertical dispersion angle 1000 Hz	155°
closest RAL colour (subject to deviations)	RAL9010	Net weight product (kg)	2.32

POLAR PLOTS

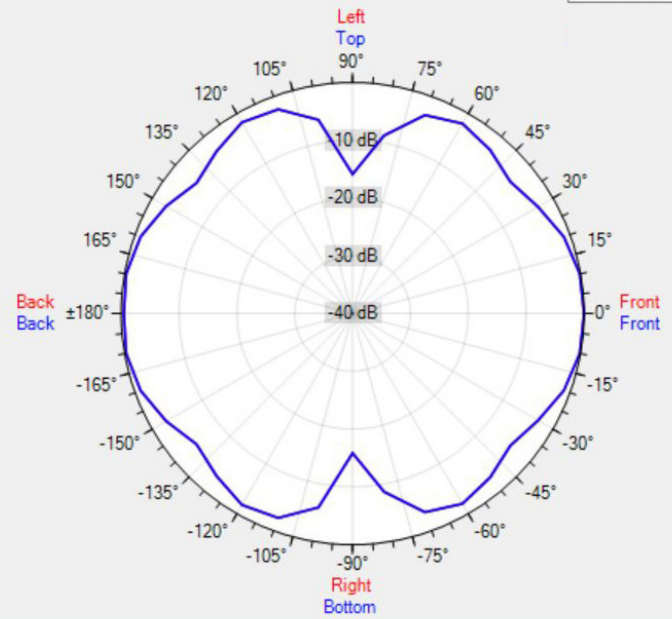
Data Shown: EN-MPBD5T10-W (APart Audio)
Display Parameters: Frequency: 1000Hz (1/24th Octave)

Horizontal
Vertical



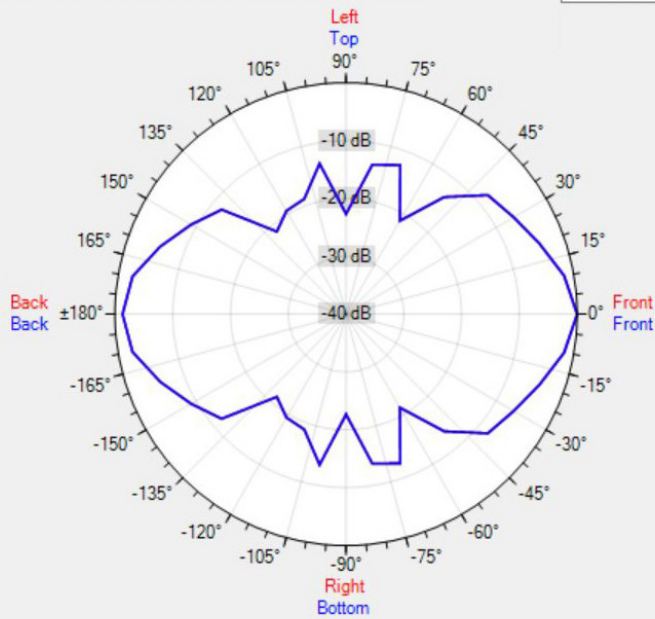
Data Shown: EN-MPBD5T10-W (APart Audio)
Display Parameters: Frequency: 2000Hz (1/24th Octave)

Horizontal
Vertical



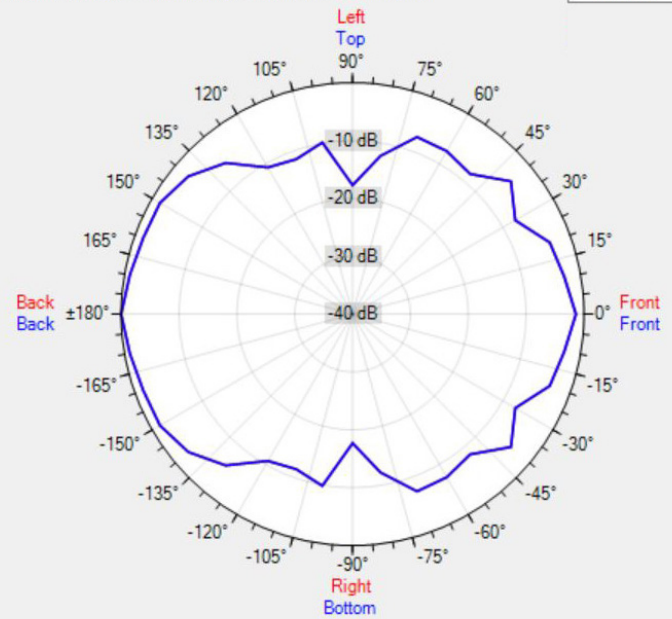
Data Shown: EN-MPBD5T10-W (APart Audio)
Display Parameters: Frequency: 4000Hz (1/24th Octave)

Horizontal
Vertical



Data Shown: EN-MPBD5T10-W (APart Audio)
Display Parameters: Frequency: 8000Hz (1/24th Octave)

Horizontal
Vertical



[MORE PICTURES](#)

