

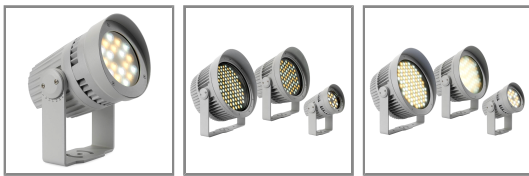


Exterior Wash 120

Exterior™ Wash 120 is a powerful, compact and energy-efficient LED lighting fixture designed to illuminate smaller structures, features of a building and landscaping. A discreet, optional snoot integrates seamlessly with the slick design of the fixtures. It has built-in display for ease-of-use, a wide selection of beam angles and is fully IP-rated for permanent outdoor use.

The Exterior Wash 120 is designed for variable color temperature (2700K-6500K) applications and is based on separate 2700K and 6500K LEDs

GALLERY



Variable color temperature control with 6 beam angle options

Functional and discreet optional snoot which integrates with the design of the fixtures

Control via DMX, RDM and OLED display

FEATURES

- Powerful LEDs (2700K, 6500K)
- Up to 2350 lumens at full white
- Six different beam angle options
- Internal power and control (DMX, RDM and OLED display)
- Rugged IP66 housing
- 0–100% intensity control

TECHNICAL SPECIFICATIONS

Physical

Length: 240 mm (9.5 in.)
Width: 198 mm (7.8 in.)
Height: 257 mm (10.2 in.)
Weight: 5.0 kg (11.1 lbs.)

Dynamic Effects

Intensity: 0 - 100%
Color temperature control: 2700 K - 6500 K

Control and Programming

Control systems: DMX, RDM
DMX channels: 3
Setting, addressing, standalone programming: Control panel with OLED display
Receiver: RS-485
Firmware update: Serial upload via DMX link
DMX compliance: USITT DMX512-A
RDM compliance: ANSI/ESTA E1.20

Optics

Minimum LED lifetime: 50 000 hours (to >70% luminous output)*
Light source: 2700 K and 6500 K LEDs
Beam angle options: 7°, 12°, 21°, 40°, 60°, 12° x 60°
**Figure obtained under manufacturer's test conditions*

Photometric Data

Total luminous output: 1300 lumens*
**Preliminary figure*

Construction

Protection rating: IP66
Color: Clear anodized (standard), black or white (optional)
Housing: Cast aluminum
Effective Projected Area (EPA): 0.05 m² including snoot
Impact resistance: IK08 (with control panel display cover plate installed)
Corrosion resistance: C5-M (very high corrosivity / marine, ISO 12944)

RoHS compliant

Installation

Orientation: Any

Mounting: Adjustable yoke

Vertical aiming: TBA

Minimum distance to illuminated surfaces: 0.2 m (0.6 ft.)

Connections

Power connection: 1.8 m (5.9 ft.) cable tail without connector

Data connection: 1.8 m (5.9 ft.) open ended 5-conductor combined input + output cable tail

All cable entries: IP68 cable gland

Electrical

AC power: 100 - 240 / 277 V nominal, 50/60 Hz

Power supply unit: Integrated, auto-sensing multi-voltage

Power consumption, steady state, all LEDs at zero intensity: 5 W

Typical Power and Current

120 V, 60 Hz: 0.4 A, 45 W, PF 0.99

230 V, 50 Hz: 0.2 A, 45 W, PF 0.89

Measurements made at nominal voltage. Allow for a deviation of +/- 10%

Thermal

Cooling: Convection

Maximum ambient temperature (Ta max.): 45° C (113° F)

Minimum ambient temperature (Ta min.): -30° C (-22° F), power must be maintained below 0° C (32° F)

Maximum surface temperature, steady state, at 40° C ambient: 70° C (158° F)

Total heat dissipation (calculated, +/- 10%): 160 BTU/hr

Approvals

EU safety: EN60598-2-5 (EN60598-1), EN62471, EN62493, EN60598-2-1

EU EMC: EN55015, EN61547, EN61000-3-2, EN6100-3-3, EN61000-4-2, EN6100-4-4, EN6100-4-5

US safety: ANSI/UL 1598

US EMC: 47 CFR Part 15 Class A

Canadian safety: CSA C.22.2 No. 250

Australia/NZ: RCM

Included Items

Power cable: Cable tail, 1.8 m (5.9 ft.), external diameter 9.5 mm (0.38 in.), installed

Data cable: Cable tail, 1.8 m (5.9 ft.), external diameter 6.5 mm (0.26 in.), installed

Cover plate for control panel

Accessories

Optical

Exterior Wash 100 Series, narrow diffuser kit: P/N 91610145

Exterior Wash 100 Series, medium diffuser kit: P/N 91610146

Exterior Wash 100 Series, wide diffuser kit: P/N 91610147

Exterior Wash 100 Series, very wide diffuser kit: P/N 91610148

Exterior Wash 100 Series, asymmetric diffuser kit: P/N 91610149

Exterior Wash 100 Series, glare shield / snoot: P/N 91611740

Related Items

Martin USB interface box incl. cables: P/N 90758090

M-PC 2U™ incl. Martin M-DMX Interface Box and USB cable: P/N 90737070

Ordering Information

Exterior Wash 120, 7°, EU, aluminum: P/N 90510335

Exterior Wash 120, 7°, US, aluminum: P/N 90510350

