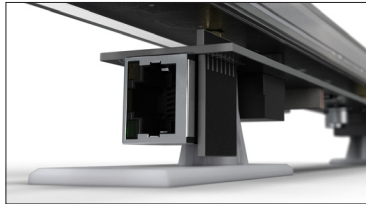


LOGIC Cove M

23.58 in
(599 mm)



Daisy chain
connection capable

FEATURES

Iluminarc LOGIC Cove is a sleek and discreet LED strip luminaire designed for installation into tight spaces. With its high quality 4-color RGBW color mixing system, Cove provides soft, pleasing accent light and indirect illumination of bright, saturated colors and white calibrated CCT presets. Cove utilizes Power Over Ethernet (POE) technology, receiving power and control via an advanced driver. Powerful control options include Calendar Scheduling via onboard webserver, DMX, RDM, Art-Net, Art-RDM, sACN, or you can use the included 8-button wall controller to trigger customizable looks.

- Very Wide filter (installed)
 - Beam Angle (Horizontal): 142.1°
 - Beam Angle (Vertical): 135.6°
 - Field Angle (Horizontal): 251°
 - Field Angle (Vertical): 167°
 - Cutoff angle: 334.2°
 - Lumens: 537
 - Base Illuminance @ 5 m: 4 lux
 - Efficacy: 43 lm / W
- Color Temperature Presets: Built-in, 1,800 to 10,000 K

SPECIFICATIONS

OPTICAL

- Light Source: 18 LEDs (quad-color RGBW) 2.5 W, (870 mA)
- Light Source Lifespan: 50,000 hours based on LED manufacturer's specifications
- White LED Native CCT: 3000 K
- Installed Optics: Very wide filter
- Open Optics
 - Beam Angle (Horizontal): 119.9°
 - Beam Angle (Vertical): 122.2°
 - Field Angle (Horizontal): 164.4°
 - Field Angle (Vertical): 165.2°
 - Cutoff angle: 178.4°
 - Lumens: 711
 - Base Illuminance @ 5 m: 9 lux
 - Efficacy: 56 lm / W

CONSTRUCTION/PHYSICAL

- Dimensions: 23.58 x 1.22 x 1.81 in (599 x 31 x 46 mm)
- Weight: 0.6 lb (0.3 kg)
- Lens Cover: Clear polycarbonate
- Mounting Options: Integrated mounting bracket, 0.157 in (4 mm) bracket holes

CONTROL SPECIFICATIONS

- Control Protocol: USITT DMX-512a, RDM, Art-Net, Art-RDM, sACN via Logic Drive 2X
- Operating Modes: Selectable personalities, via Logic Drive 2X
 - Red (1-channel): Red
 - Green (1-channel): Green
 - Blue (1-channel): Blue
 - White (1-channel): White
 - TW (2-channel): Dimmer, White CCT preset
 - RGB (3-channel): Red, Green, Blue
 - RGBW (4-channel): Red, Green, Blue, White
 - RGBW+D (5-channel): Red, Green, Blue, White, Dimmer
 - FULL (10-channel): Dimmer, Red, Green, Blue, White, White CCT presets, Strobe, Auto Programs, Dimmer speed presets
- Standalone Control: Yes, Logic Wall Con via Logic Drive 2X
- Fixture setup: Logic Drive 2X (RDM, Webserver or Display), Art-RDM (DMX Workshop)

ELECTRICAL

- Input Voltage: 52-56 VDC
 - Power and Current (fixture via POE): 15 W
- Power Supply: POE++, IEEE 802.3bt, type 4, class 8 (via Logic Drive 2X)
- Dimmer: Electronic
- Power Linking: 5 units per port via POE++, IEEE 802.3bt, type 4
- Power/Data Connection: 2 Ethernet (RJ45)
- Required Cable Specifications
 - Cable type: CAT6/A, Shielded
 - Conductor Diameter: ≥ 23 AWG (≥ 0.5733 mm)
 - Conductor Material: Solid Bare Copper Wire (stranded not supported)
 - Cable Terminator: RJ45, CAT6/A, Shielded
- Cable Length(s) Supported:
 - Total Max Cable Length (Drive to first fixture): ≤ 100 m / 328 ft
 - Total Max Cable Length (Drive to last fixture): ≤ 140 m / 460 ft
 - Total Max Cable Length (first fixture to last fixture): ≤ 40 m / 131 ft
- Recommended Cable (or equivalent): Belden 2413F, 2412F

THERMAL SPECIFICATIONS

- Cooling: Convection
- Operating Temperature Range: -4°F to 113°F (-20°C to 45°C)
- Maximum Surface Temperature: 158°F (70°C)
- Minimum Distance to Flammable Surface: 11.8 in (0.3 m)
- BTU/hr: 51.1

REGULATORY & VOLUNTARY QUALIFICATION

- US Safety: UL 2108, UL 1598A
- Canadian Safety : CSA-C22.2 No. 250.2
- Certification Listings: CE, MET, FCC, ROHS
- Environment: Dry location, IP20, All indoor permanent installations.
 - Please refer to the User Manual for more detailed information on installation.
- Warranty: 36-month manufacturer's limited warranty (for covered regions only)
- Installation Orientation: Any

ACCESSORIES

- Required: Logic Drive 2X
- Included: Very wide filter (installed)
- Optional: RDM2GO