



MMK 965-1



Quick Guide
 Kurzanleitung
 Guide de démarrage rapide
 Guida rapida
 Instrucciones resumidas
 Instruções resumidas
 Beknopte gebruiksaanwijzing
 Krótka instrukcja obsługi
 Snabbguide

Kort vejledning
 Pikaohje
 Γρήγορος οδηγός
 Kısa Kılavuz
 Краткая инструкция
 快速指南
 快速使用指南
 クイックガイド
 퀵 가이드

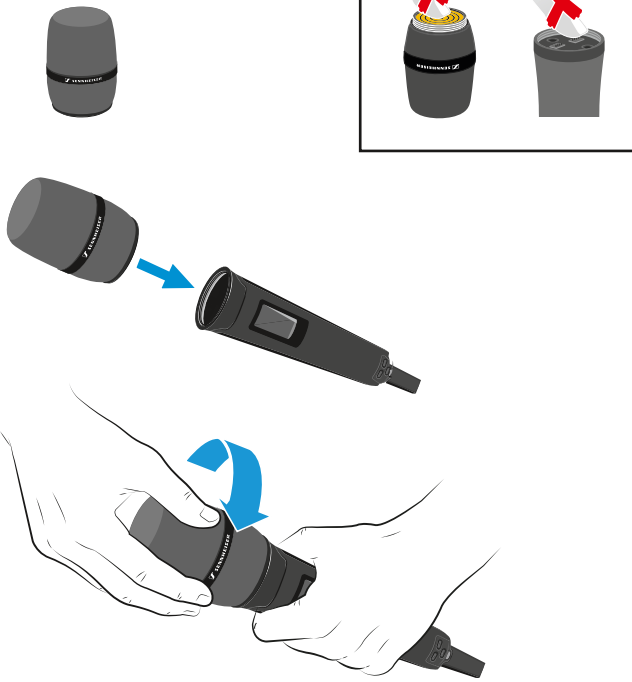
Sennheiser electronic GmbH & Co. KG

Am Labor 1, 30900 Wedemark, Germany
www.sennheiser.com

Printed in Germany
Publ. 03/19, 583922/A01

SENNHEISER

Setup

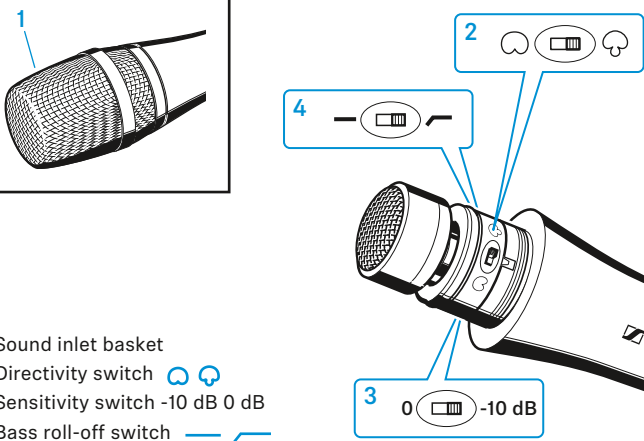







In the box

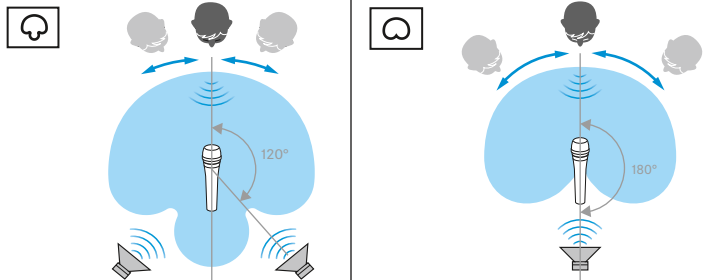


Compatible with

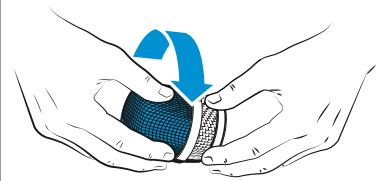
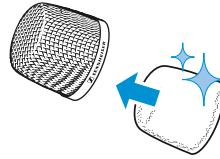
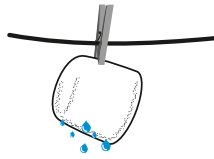
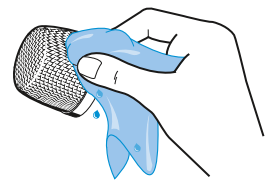
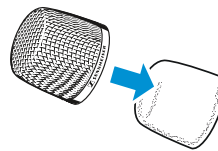
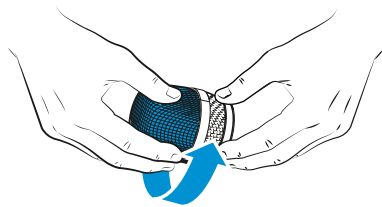
ew G4:	SKM 100 300 500 G4
ew G3:	SKM 100 300 500 G3
2000 series:	SKM 2000
Digital 6000:	SKM 6000
Digital 9000:	SKM 9000



- 1 Sound inlet basket
- 2 Directivity switch   
- 3 Sensitivity switch -10 dB 0 dB
- 4 Bass roll-off switch  



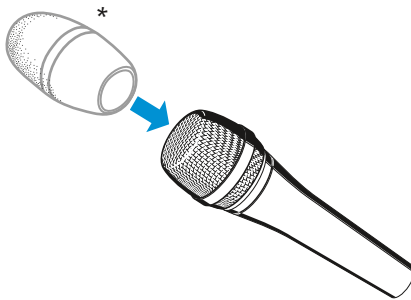
Cleaning



Accessories



MZW 5000



*MZW 5000 not included



-20 dB

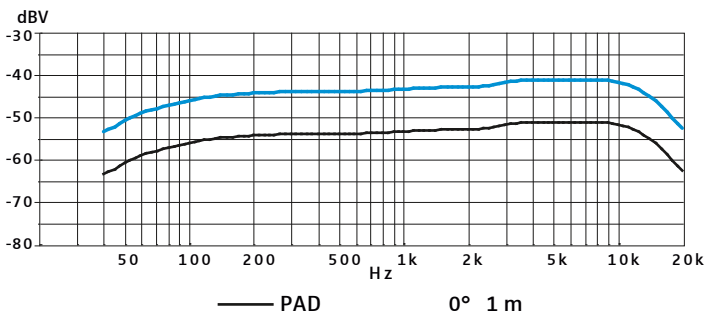
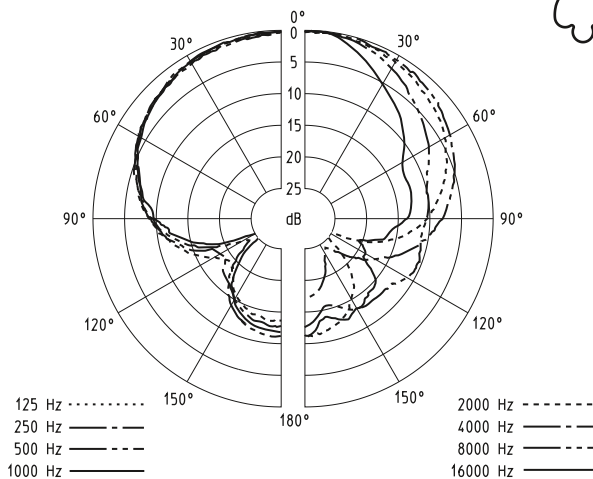
Specifications

Transducer principle	externally polarized dual diaphragm condenser microphone
Pick-up pattern	cardioid/supercardioid, switchable
Sensitivity	7.0 mV/Pa
with preattenuation	2.2 mV/Pa (factory setting)
Max. SPL at 1 kHz	144 dB
with preattenuation	154 dB factory setting
Dynamic range	126 dB(A)
Diameter of diaphragm	2.54 cm (1")
Frequency response	40 to 20,000 Hz
Equivalent noise level	
A-weighted (DIN IEC 651)	18 dB
Weight	162 g

Polar pattern and frequency response



supercardioid



cardioid

