



Q·2 W

White LED flood blind strobe



Description

The Q-2 W is a compact and lightweight flood/blind/strobe with fast response, and controllable segments for pixel mapping applications. Sharing some of the key features of the Q-7 W, like wide angle lighting coverage, and a powerful strobe effect, the Q-2 W also includes the benefits of 12-segment pixel mapping control and low power consumption. Because of its efficiency, small size, and easy rigging options, the Q-2 W is a must-have flood/blind/strobe for any rental company, touring production, or corporate event.

Features and benefits

- ✓ High-performance IP65 white LED light source
- ✓ 12 individually controllable segments
- ✓ 110° wide-angle coverage / Powerful high-speed strobe
- ✓ Flicker-free / Programmable scenes
- ✓ Cool white 5700K
- ✓ Only 6Kg (13.2 lbs) / Low power consumption (140W)
- ✓ Accurate 16bit dimming performance
- ✓ Practically maintenance-free

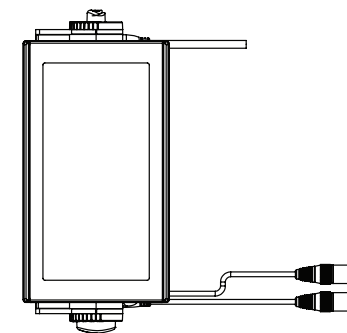
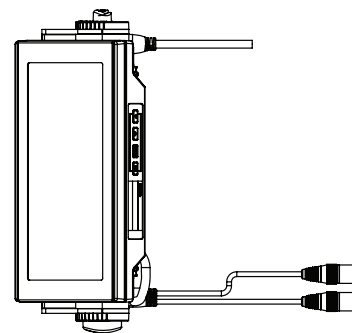
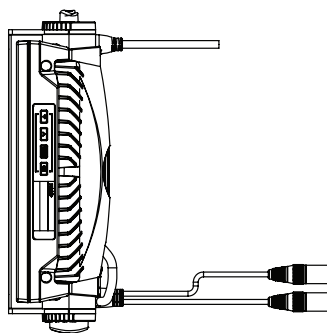
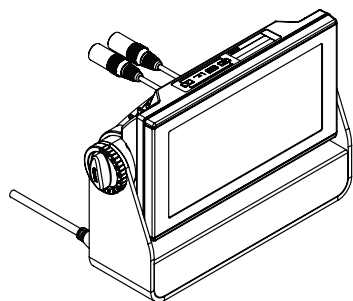
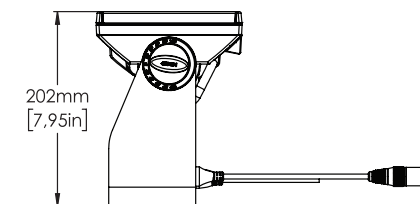
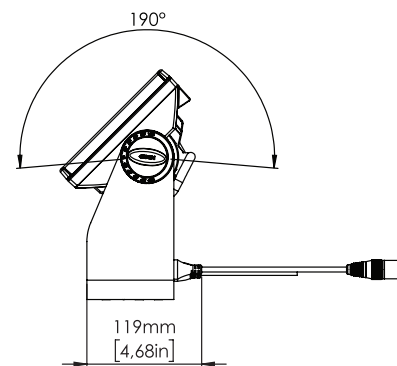
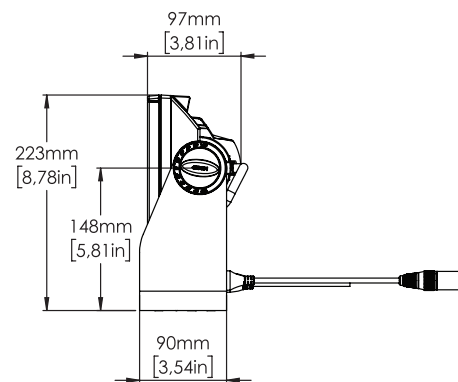
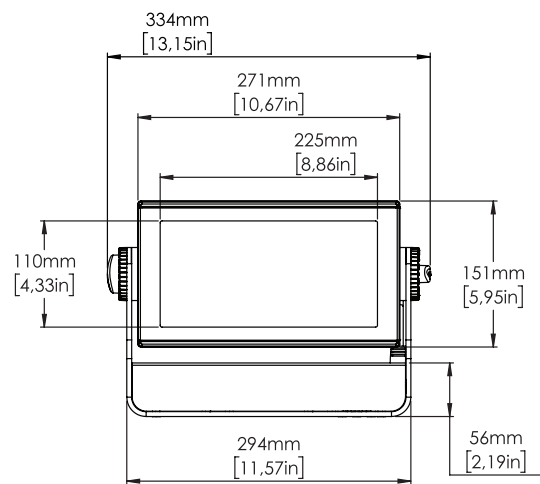
Certifications & classifications

IP65

RoHS

CE





Specification

Optical Data	LED expected lifetime	50,000 hours
	Lightsources	432 x cool white LEDs (5,700K)
	Native lens options	110°
	Optional filters	Extra medium angle soft diffusion, Q, external Extra wide angle soft diffusion, Q, external Elliptical horizontal effect, Q, external Elliptical vertical effect, Q, external
Photometric	Average CRI (CTC)	83
	Color temperature	5700K
	Efficacy	114 lm/W
	Light output all LEDs on	22976 lm
	Lumen per kilogram	3829 lm / Kg
	Lux @ 10m	82 lux
	Lux @ 3m	907 lux
	Lux @ 5m	326 lux
	Native beam angle(s)	112° (with 110° lens)
Physical	Native field angle(s)	152°
	Color options	Black - RAL 9004 Custom color - Any RAL White - RAL 9010
	Effective Projected Area	0.96 Square ft
	IP class	IP65
	Lens material	Tempered glass front
	Material	Aluminium
	Net dimensions	334 x 223 x 105 mm
	Net dimensions inches	13.2 x 8.8 x 4.1 inches
	Net weight	6 kg (13.2 lbs)
Features	Color calibration	Single-unit color
	Dimming	2 Smooth fade in, DMX-controllable curves: gamma corrected, and linear
	Filters	Optional external spread angle filters (requires Accessory Holder)
	LED panel	12 individually controllable segments
	Strobe	Ultra-high-speed strobe effects Pixel strobe feature (up to 12 segments)
	Tilt	0 - 190°

Electrical	Electrical protection	Overload protection
	Input voltage, absolute max. rating	90 - 305 VAC; 50 / 60 Hz
	Input voltage, nominal	100 - 277 VAC; 50 / 60 Hz
	Max inrush current 230VAC	75 A
	Max power consumption	265 W
	Power factor	0.96 PF (230 V)
	Power Supply Unit	Inbuilt IP 67 Auto-ranging electronic switch-mode
	Standby power consumption	5 W
Programming and Control	16-bit control	Dimmer
	Cabled DMX	5 pin XLR input/output
	DMX channels	1, 3, 6, 12, 14 or 24
	DMX modes	6
	Protocol	USITT DMX512A RDM ANSI E1.20
	Setting and addressing	OLED graphical display / 4 buttons RDM ANSI E1.20 Standalone mode
	Standalone mode	Quick Color Up to 24 programmable scenes
Connections	DMX data in/out	2 IP65 XLR 5-pin cables 0.5m (permanently wired)
	Power	Power cable 1 meter with bare ends (permanently wired)
Installation	Mounting point	2 quarter-turn locking points for one Omega bracket
	Orientation	Any
	Rigging possibilities	Floor stand (included) or hanging (Omega clamps included)
	Safety features	Bottom mount for safety wire Minimum distance to combustible materials: 0.3 meter (11 in).
Thermal	Cooling	Active, Forced Air, Temperature- regulated
	Humidity (max.)	98 %
	Temperature range, operating	-40°C to 50°C
	Temperature range, start-up	-20°C to 50°C
	Temperature range, storage	-40°C to 80°C
	Thermal protection	Automatic overtemperature protection
	Total heat dissipation, max power	904.2 BTU per hour

	Total heat dissipation, standby	17.1 BTU per hour
Included items	Included items	Mounting bracket (incl. screws) 1 Omega bracket with quarter-turn fasteners Safety instructions and installation quick guide
Conforms To	CE - 2014/30/EU: EMC Directive	EN 55103-1 EN 55103-2 EN 55015 EN 61547 EN 61000-3-2 EN 61000-3-3
	CE - 2014/35/EU: Low Voltage Directive	EN 60598-1 EN 60598-2-17 EN 62471 EN 60529
	RoHS2 Directive	2011/65/EU
	UL	UL Std. 1573
Certified To	CSA	CSA-E598-2-17-98, Ed: 1 CSA E60598-1, Ed: 3

NOTES:

Due to continuous improvements and innovations, specifications may change without notice.

LEDs' expected lifetime provided by manufacturer and obtained under manufacturer's test conditions.

Zoom range defined as a minimum beam angle to a maximum field angle.

Photometric measurements obtained with Goniometer Scan / SGM Illumination Lab 1.6.0.0.

Lumen output in pixel products is calculated.

Ordering information

Qty	Product name	Item number
<input type="checkbox"/>	Q-2 W White Flood, Std, BL	80030536
<input type="checkbox"/>	Q-2 W White Flood, Std, WH	80030567
<input type="checkbox"/>	Q-2 W White Flood, Std, CU	80030568
<input type="checkbox"/>		
	Accessories	Item number
<input type="checkbox"/>	Omega Bracket with 1/4-turn fasteners	83060602
<input type="checkbox"/>	4-way Barndoors for P·2, Q·2, i·2	83061129
<input type="checkbox"/>	8-way Barndoor for P·2, Q·2, i·2	83061130
<input type="checkbox"/>	Accessory Holder for Q·2	83061128
<input type="checkbox"/>	Color Frame for P·2, Q·2, i·2	83061131
<input type="checkbox"/>	Floor Stand for P·2 & Q·2	83060613
<input type="checkbox"/>	Flight Case for 4 pcs P·2, Q·2, Q·2 W & i·2 incl barndoors	82051503
<input type="checkbox"/>	SGM USB uploader cable	83062011
<input type="checkbox"/>	Vacuum Test Kit	83061136
<input type="checkbox"/>	A·4	80070217
<input type="checkbox"/>	RDM Addressing Tool	
<input type="checkbox"/>		



Headquarter +45 70 20 74 00

Mail info@sgmlight.com

Website sgmlight.com