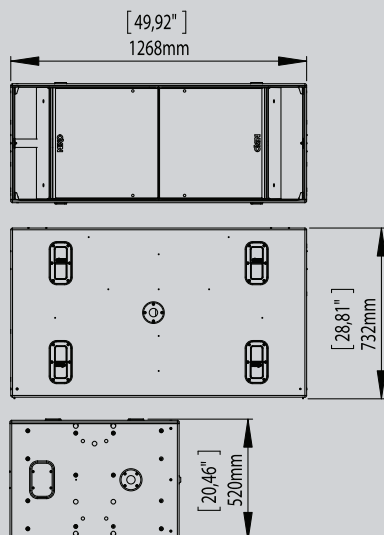


RS18 SubBass

NEXO

RS18



RS18 Advantages

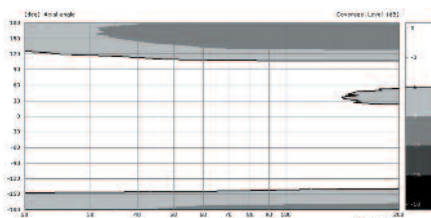
- Low Profile, High Output, Modular Scalable Bass
- Configurable directivity pattern
- Cardioid Pattern Reduces Rear Levels by Minimizing Rear/Side Wall Reflections
- Aerodynamic Profiled Vents with 20db Noise Reduction and improved Linearity at high SPL
- Applies across entire NEXO Product Line

The RS18 applies NEXO's patent pending RAY SUB technology in a 2 x 18" subwoofer format. RAY SUB technology optimizes the positioning and phase relationships of radiating surfaces in vented enclosures, permitting acoustic distance from rear to front sections to always increase as frequency decreases. Consequently rear and front sections sum up efficiently over the entire subwoofer bandwidth, allowing for an average of 5db gain from the rear section in the forward direction and cancelling in the rear direction.

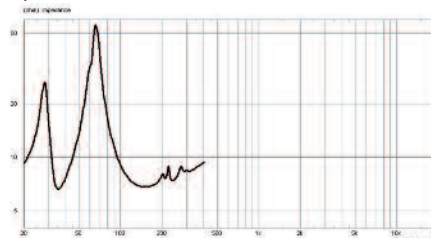
Utilized in a stand alone format, RAY SUB technology, allows the same cabinet to be configured for any polar pattern, omni-directional as a standard direct

radiating subwoofer when speakers are facing the audience, or highly directional when a speaker cabinet is rotated sideways or upwards. With arrays, RAY SUB subwoofers can be set back to back, front to front, alternate, in vertical columns and, when column length is sufficient, to be beam-steered upwards or downwards. Comprising of two 18 inch transducers with a frequency response of 31Hz – 100Hz and a sensitivity of 107db SPL, the RS18 delivers unchallenged versatility for installations and touring requirements where large format sub-bass cabinets are required.

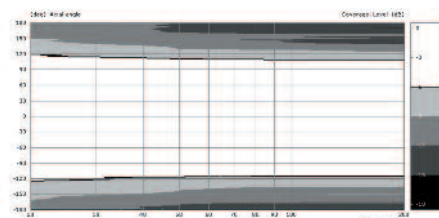
Cardioid Mode 0°



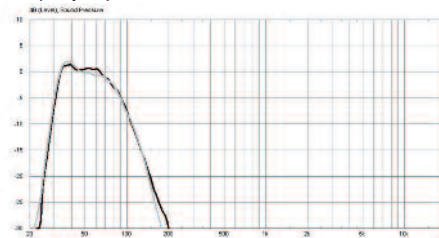
Impedance



Cardioid Mode 90°



Frequency Response



NEXO
www.nexo.fr

RS18 SubBass

NEXO

RS18



NEXO is one of the world's leading sound reinforcement loudspeaker manufacturers. Founded in 1979, the company is dedicated to crafting practical solutions with solid engineering. Each new design begins with a proprietary sophisticated computer simulation process that allows every parameter to be extensively modeled and simulated, leading to breakthrough cost and performance gains. NEXO's comprehensive product line includes loudspeakers, analogue and digital control electronics and amplification; all designed to deliver consistent sound quality and long term reliability for a broad range of applications.

NEXO S.A.
Parc d'Activité
du Pré de la Dame Jeanne
B.P. 5
60128 PLAAILLY
Tel: +33 (0) 3 44 99 00 70
Fax: +33 (0) 3 44 99 00 30
e-mail: info@nexo.fr

NEXO LatAM
Tel: +1 305 677 9322
Fax: +1 360 234 7870
e-mail: info@nexo.fr

NEXO Asia
GPO Box 806
Hong Kong
SAR China
Tel: +852 9096 3472
Fax: +852 2104 3214
e-mail: info@nexo.fr

NEXO
www.nexo.fr

RS18 PRODUCT FEATURES

Components	2 x 18" (46cm) long excursion neodymium 8Ω drivers
Height x Width x Depth	520 x 1403 x 732mm (20.46" x 55.24" x 28.81") with handles 520 x 1238 x 732mm (20.46" x 49.92" x 28.81") without handles
Shape	Rectangular
Weight	Net Weight 90Kg (199 lbs) Net Weight with handles 105Kg (231.5 lbs) Net Weight with rigging system 126Kg (278 lbs)
Connectors	4 x NL4MP SPEAKON 4 pole on two connection plates (In & Through)
Construction	Baltic Birch ply finish with structured black coating. Dark grey carpet finish also available.

RS18 WITH NX242-ES4 TDCONTROLLER OR NXAMP SYSTEM SPECIFICATION

	Omni	Directional
Frequency Response @ -3db [a]	31Hz-100Hz	31Hz-100Hz
Usable Range @ -6db [a]	29Hz-200Hz	29Hz-120Hz
Sensitivity 1W @ 1m [b]	107dB SPL Nominal	105dB SPL Nominal
Peak SPL @ 1m [b]	143-146dBPeak (2x1750W to 2 x 4000/8Ω)	140-143dBPeak (2x1750W to 2 x 4000/8Ω)
Dispersion	Omni & Directional pattern over the entire useable bandwidth depending on the NX242ES4 or NXAMP TDCONTROLLERS setup. (two channels of the NX242 or NXAMP are required to process directional setups)	
Directivity Index [c]	1.5<Q<2 1.7dB<DI<3dB	Q=4.3 DI=5.3dB
Crossover Frequency: NX242 or NXAMP TDCONTROLLERS preset dependent	From 75Hz to 100Hz	From 75Hz to 100Hz
Nominal Impedance	2 x 8Ω	2 x 8Ω
Recommended Amplifiers	1 amplifier channel is required for omni mode operation, rated at 3500 to 8000 Watts into 4Ω	2 amplifier channels are required for directional mode operation, each rated at 1750 to 4000 Watts into 8Ω per channel

SYSTEM OPERATION

Electronic Controller	NX242ES4 Digital TDCONTROLLER & NXAMP Powered Digital TDCONTROLLER presets are precisely matched to RS18 and include sophisticated protection systems. Using RS18 without a properly connected TDCONTROLLER will result in poor sound quality and can damage components.
Speaker Cables	1-/1+ = Right or Rear 2-/2+ = Left or Front RS18 must use separate cables to the main system
Accessories	Bumper – Flying Plates – Handles – Dolly – Front Wheel Board
Rigging System [d]	Please refer to the user manual before any operation.

SHIPPING & ORDERING

Packaging	RS18s are packaged individually. Order RS18-C (finished grey carpeting) or RS18-P (finished in black structured coating)
-----------	-----------------------------------------------------------------------------------------------------------------------------

As part of a policy of continual improvement, NEXO reserves the right to change specifications without notice.

[a] Response curves and data: anechoic far field above 200 Hz, half-space anechoic below 200 Hz.

[b] Sensitivity & peak SPL: will depend on spectral distribution. Measured with band limited pink noise.

Refers to the specified +/- 3 dB range. Data are for speaker + processor + recommended amplifier combinations.

[c] Directivity curves and data: 1/3 octave smoothed frequency response, normalized to on-axis response. Data obtained by computer processing of off-axis response curves.

[d] Please refer to the RS15 user Manual.

Usable range data: frequency response capability with TD crossover slopes removed.

Architectural and Engineering Specifications

The sub-bass loudspeaker system shall have two 18inch long excursion 8" cone transducers. Nominal Sensitivity shall be 107dB. When driven by a NXAMP 4x4 or by a NX242 properly-connected to amplification capable of delivering into one channel 3500 to 8000 watts for directional mode and 2 amplifier channels are required for directional mode operation, each rated at 1750 to 4000 Watts into 8Ω per channel. The system shall be capable of 143dB to 146dB peak SPL in Omni mode and 140dB to 143dB peak SPL in directional mode, with a frequency response of 31Hz to 100Hz ±3dB[a]. Electrical connections shall be made via 2x 4-pole NL4MP SPEAKON connectors.

The system shall have a tuned ported rectangular enclosure constructed of 18ply Baltic birch, finished in either black or white textured coating and having exterior dimensions no greater than 520mm H x 1403mm W x 732mm D (20.46in H x 54.24in W x 28.81in D); the system shall weigh 90.0kg (199lbs). Exterior hardware shall include 2- pole sockets. Interior components shall be protected by a powder coated perforated steel grille. The system shall be the RS18 with a NXAMP 4x4 or NX242.

LIMITED WARRANTY

NEXO loudspeakers and electronics are covered against defects in workmanship or materials for a period of two (2) years from the original date of purchase. At the option of NEXO the defective item will be repaired/replaced with no charge for materials/labour. The item is to be adequately packaged and dispatched, pre-paid, to a NEXO authorised distributor/service centre. Unauthorised repair shall void the warranty. The NEXO warranty does not cover cosmetics or finish and does not apply to any items which in NEXO's opinion have failed due to used abuse, accidents, modifications or any type of misuse. All images and text herein are the property of NEXO SA, and deemed accurate, although specifications are subject to change without notice.