

The SC-610M is a compact, highly intelligible speaker suited to public address announcement applications. Its external speaker component finished with powder coating, and stainless steel bracket and screws ensure the unit's weatherproof capability.

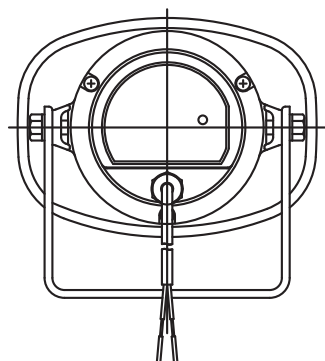


Order no: SC-610M EU

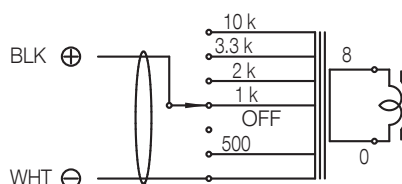
Specifications

Frequency response	315 Hz - 12.5 kHz
Connection	Cable with 2 wires
Sensitivity (1#V, 1#m) (combined)	110 dB
Rated input	10 W
Tappings	100V line: 1k Ω (10W), 2k Ω (5W), 3.3k Ω (3W), 10k Ω (1W) 70V line: 500 Ω (10W), 1k Ω (5W), 2k Ω (2.5W), 3.3k Ω (1.5W), 10k Ω (0.5W)
Rated impedance	100 V, 70 V
Weight	1,2 kg
Certificates	IP65
Dimensions (W x H x D)	172 x 161 x 188 mm
Dimensions (ϕ x D)	x 188 mm
Gross weight	1,4 kg
Finish	Aluminium, powder coating, off-white (RAL 9010 or equivalent)
Operating temperature	-20 °C to +55 °C (must be free from dew condensation)

Appearance



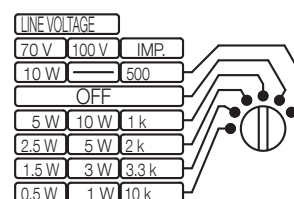
Rear View



(Transformer connection when the speaker is supplied from the factory)

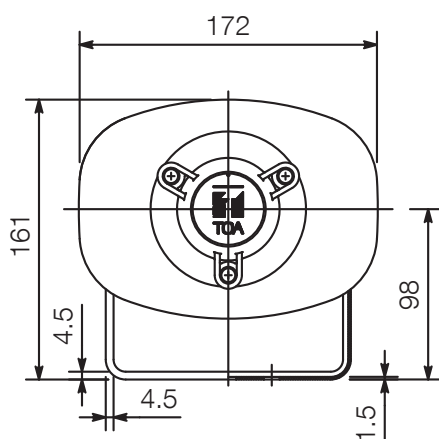
Wiring diagram

CAUTION
NEVER SET THE SWITCH TO " * POSITION
FOR 100 V LINE OPERATION, AS DOING SO MAY
RESULT IN DAMAGE TO THE SPEAKER.

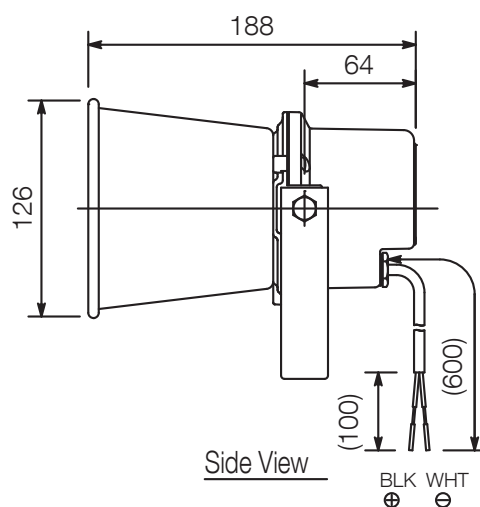


Set the impedance selector to the desired impedance.

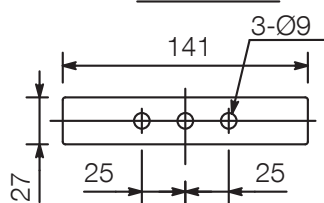
Impedance selection



Front View



Side View



Bracket dimensional diagram

UNIT:mm

SCALE:1/5

Note: Numerical values in parentheses are for reference only.