

The SP-420 is a bracket designed to exclusively mount the BS-1030W Universal Speaker in a wall or ceiling. The bracket can be easily mounted to the surface made of the plaster board or plywood. Make a 175#260 mm hole (tolerance:  $\pm 3$  mm) in the wall or ceiling before mounting.

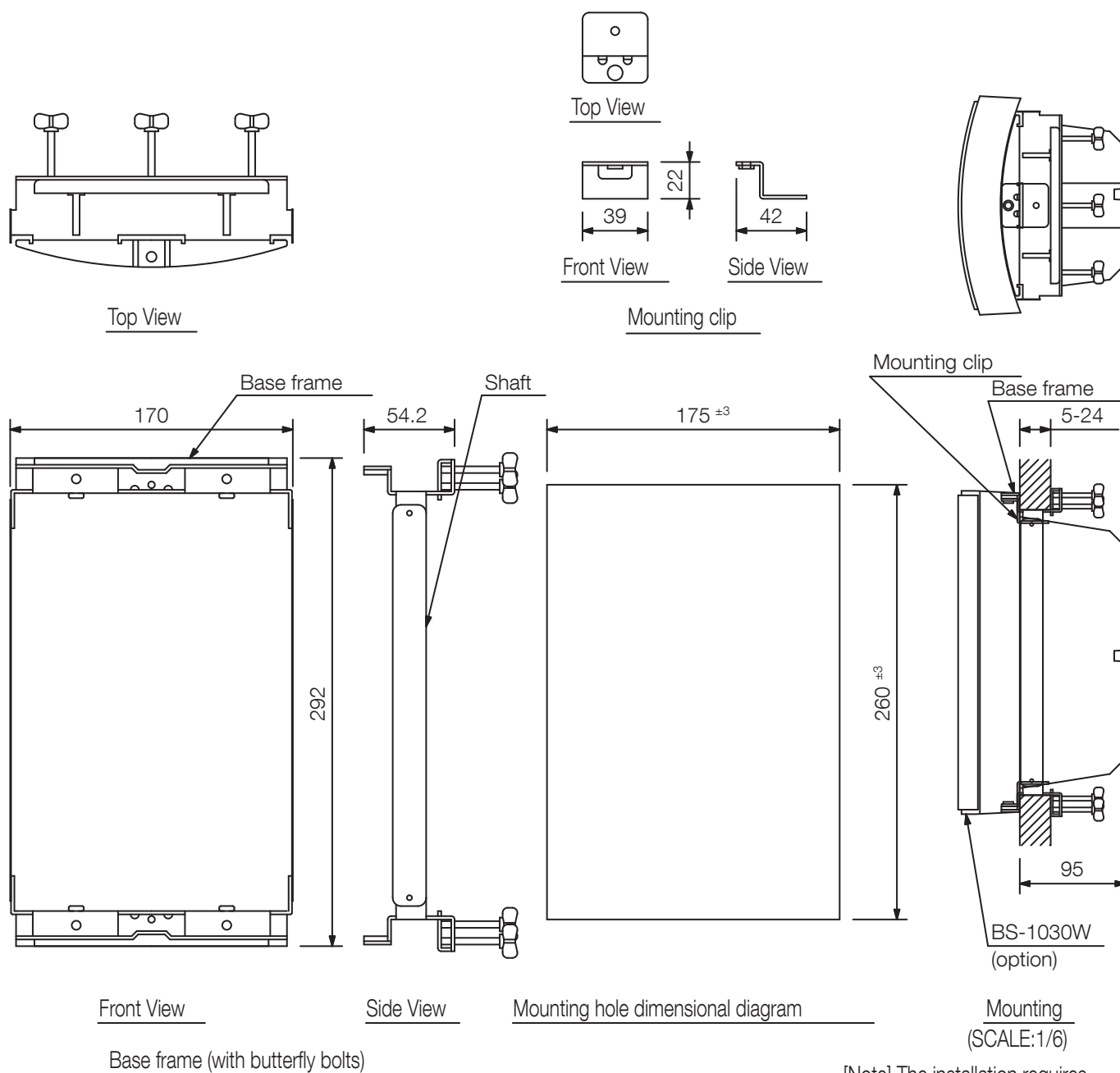


Article number:SP-420 EU

## Specifications

Finish	Steel plate, surface-treated, paint, white,
--------	---

## Appearance



[Note] The installation requires a space of at least 95 mm from the ceiling or wall surface.

UNIT:mm

SCALE:1/4