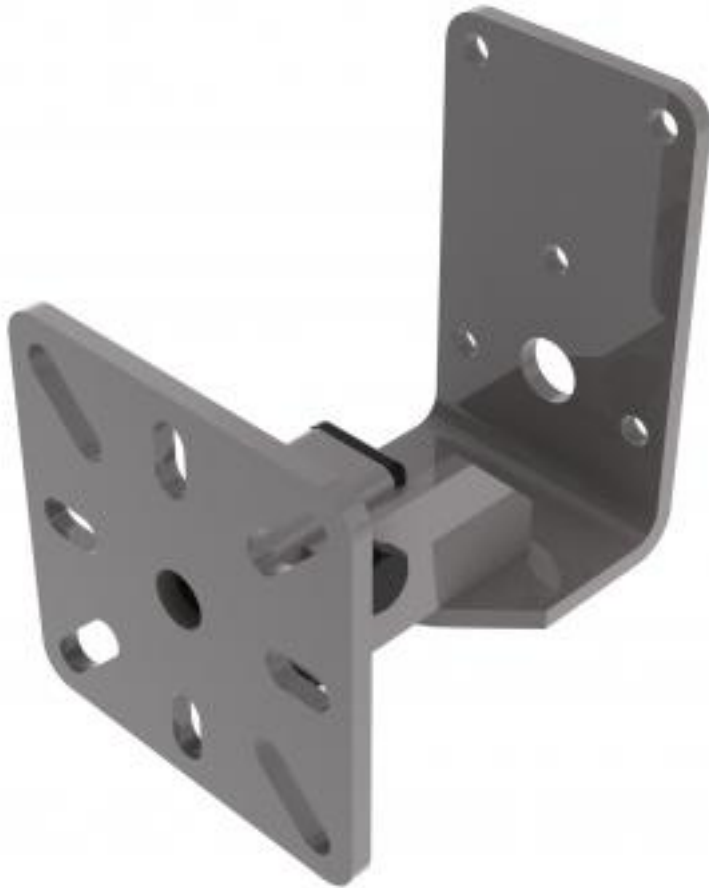


WME90-G | Back Mount Wall Bracket



A versatile bracket with offset, tilt and swivel adjustment

- Bracket fixes to back of speaker
- Bracket mounts to wall
- Easily variable wall to speaker distance

Compatible with manufacturer/model:

- AQ10
- AQ12
- AQ28
- AQ8

Materials of construction: Powder coated mild steel

Max weight (kg): 18.00

Manufacturing address:

Powerdrive Drum Company Ltd • Unit M1 Cherrycourt Way • Stanbridge Road
Leighton Buzzard • Bedfordshire • LU7 4UH • UK
T: +44 (0)1525 370292 • F: +44 (0)1525 852126

www.mypowerdrive.com • E&OE • All rights reserved • Powerdrive Drum Company Ltd 2015



WME90-G | Back Mount Wall Bracket



| | |
|------------------------|---------------------------|
| Product category: | WALL |
| W L H/D (mm): | 115.00 126/146 154.50 |
| Shipping weight (gms): | 1,323 |
| Mount position: | Back |
| Mount type: | Powerdrive Type 90 |
| Bracket location: | Wall |
| Drop (mm) | N/A |
| Girder span (mm): | N/A |
| Swivel rotation angle: | 150 ° |
| Tilt angle: | 30 ° |

