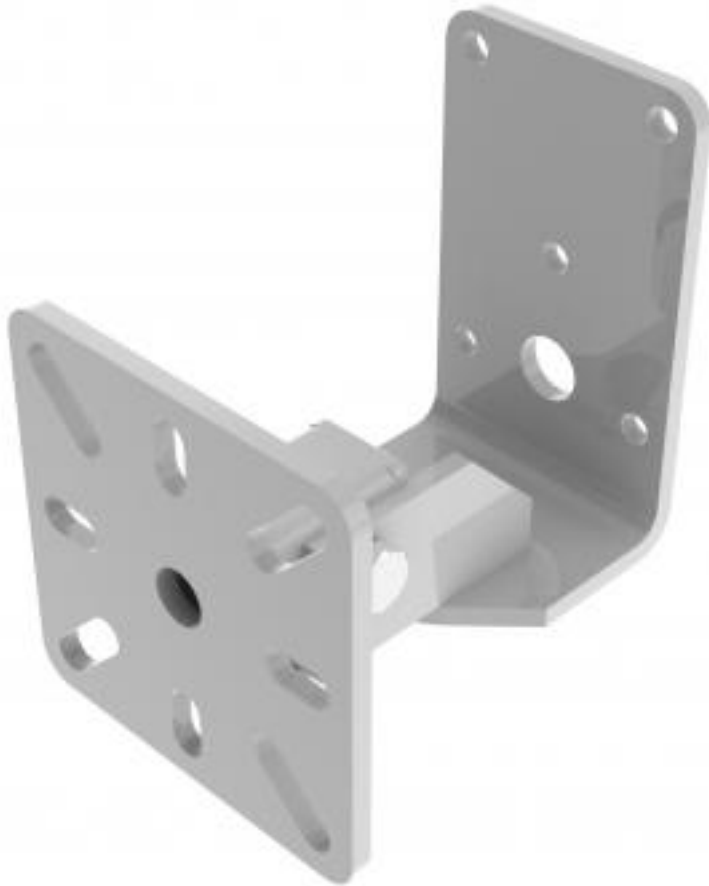


# WME90-W | Back Mount Wall Bracket

---



A versatile bracket with offset, tilt and swivel adjustment

- Bracket fixes to back of speaker
- Bracket mounts to wall
- Easily variable wall to speaker distance

**Compatible with manufacturer/model:**

- AQ10
- AQ12
- AQ28
- AQ8

**Materials of construction:** Powder coated mild steel

**Max weight (kg):** 18.00

---

**Manufacturing address:**

Powerdrive Drum Company Ltd • Unit M1 Cherrycourt Way • Stanbridge Road  
Leighton Buzzard • Bedfordshire • LU7 4UH • UK  
T: +44 (0)1525 370292 • F: +44 (0)1525 852126

[www.mypowerdrive.com](http://www.mypowerdrive.com) • E&OE • All rights reserved • Powerdrive Drum Company Ltd 2015



# WME90-W | Back Mount Wall Bracket



Product category:	WALL
W   L   H/D (mm):	115.00   126/146   154.50
Shipping weight (gms):	1,323
Mount position:	Back
Mount type:	Powerdrive Type 90
Bracket location:	Wall
Drop (mm)	N/A
Girder span (mm):	N/A
Swivel rotation angle:	150 °
Tilt angle:	30 °

